

School Of Public Health Prospectus

- Bachelor's of Public Health
- Master's of Public Health



TEXILA
AMERICAN
UNIVERSITY
ZAMBIA



School of Public Health (SOPH)

Public health is concerned with the protection, preservation and promotion of the health of communities and populations. Public health professionals therefore need to be appropriately trained to respond to the various community health problems. Through training and acquisition of relevant knowledge and skills in a multidisciplinary manner, public health professionals will understand how to identify and approach issues affecting populations, be able to develop appropriate strategies for resolving them, and monitor their implementation. The School of Public Health (SPH) thus provides opportunities for such training, as well as for research and public health practice. Public Health degree is a widely recognized professional credential for those seeking leadership and managerial positions in governmental, nonprofit, and private organizations in the public health industry. Texila American University's Master of Public Health could help you develop the administrative, ethical, and professional skills needed to apply public health principles to health education and communication programs.

Message From The Founders

Dear Students,

We, Mr. S.P. Saju Bhaskar, and Ms. Chithra Saju are immensely grateful to be able to reach you through this Texila American University (TAU) Program Brochure. It has been an eventful journey thus far and will continue to only get more exciting further. We are proud of all your achievements and involvement in the activities thus far.

Texila has seen several students through the years and what has never failed us is the memories each cohort leaves behind. We are blessed with students who possess priceless talents and are passionate about their dreams. That is why TAU is fully focused on nurturing every student so that each individual student will be able to contribute to society in any possible way.

We commend the students for adhering to the campus culture, accepting fellow students with warmth, and working tirelessly towards their goals. These are the driving factors that propel Texila towards progress. Our students have never failed to wow us with their work and dedication in all the opportunities that knock on their door. Texila will keep shaping its students towards excellence and send them as the finest professionals into society.

We once again take this opportunity to welcome our students and freshmen batch into the portals of this great institution and look forward to their individual contribution towards the growth in their careers as well as in Texila.

Best Wishes!

**President and Executive Vice President,
Texila American University.**



About

Texila American University – Zambia

Texila being the frontier in the field of education has established its new campus at Zambia a landlocked country of rugged terrain, diverse wildlife, with many parks and safari areas. TAU-Zambia adding to its credit has successfully registered with Higher Education Authority (HEA), Ministry of Higher Education, Zambia in 2016 to offer School of Medicine, School of Public Health, School of Management, School of Information technology. TAU-Zambia has kept focus in transforming the aspiring students into expertise workforce. All our programs as well as the curriculum are designed keeping in mind to bridge the skill gaps of the students before entering the corporate. Our team of expert faculties have not only taken care to provide all the required knowledge transfer in the various subject areas but also for the overall development of the students.

Bachelor of Public Health





Overview of **Bachelor of Public Health**

Welcome to Texila American University (TAU) Zambia, where the vibrant world of public health awaits you! Our Bachelor's degree in Public Health is not just about treating individuals – it's about empowering you to shape the health of entire communities.

Explore Diverse Disciplines

Dive into a fascinating curriculum covering everything from epidemiology to environmental health. Gain the skills to design effective public health programs and policies that make a real difference.

Get Hands-On

At TAU Zambia, we believe in learning by doing. You'll roll up your sleeves and dive into real-world projects, tackling global health challenges head-on.

Launch Your Career

Join us and unleash your potential as a force for positive change. Whether you're drawn to nonprofits, government work, or healthcare, our program prepares you for a fulfilling career in public health.

Affiliations & Membership:



Program Objectives

The overarching goals of the curriculum in public health are to produce graduates who will:

A

Rise to the challenge of understanding the world in a nuanced way expressing a broad world view and an expansive view of health.

B

Be informed, attuned, and energized advocates of health accepting individual responsibility to effect positive change.

C

Demonstrate skill in critical and analytical thinking.

D

Communicate effectively both orally and in writing with a variety of audiences.

E

Be sensitive and astute observers.

F

Commit to being educated consumers of health information.

G

Apply skills and tools acquired to an array of roles in the realm of employment contributing directly or indirectly to public health.



Program Outcomes

On successful completion of Bachelor of Public Health programme, graduates are expected to have gained the technical and professional knowledge and interpersonal skills necessary to work as competent professionals. The skills gained in the program will enable them to pursue a range of careers related to public health in Zambia and abroad.

Knowledge

- ▶ Selected themes and issues in public health
- ▶ Factors that influence health and well-being
- ▶ Research methods used in public health
- ▶ Theoretical understanding of public health and related fields

Thinking Skills

- ▶ Apply theory in the assessment of public health policy interventions and developments.
- ▶ Develop an understanding of, summaries and synthesize materials from a range of sources to analyze issues in health.
- ▶ Identify, synthesize and evaluate relevant primary and secondary data sources.
- ▶ Recognize the diversity of perspectives under pinning public health.
- ▶ Reflect on personal knowledge and develop strategies to enhance learning.
- ▶ Critically appraise research under-taken in public health.

Subject Based Practical Skills

- ▶ Independent learning
- ▶ Problem solving skills
- ▶ Data collection and research skills
- ▶ Evaluation and analytical skills
- ▶ Locate and retrieve information from a variety of courses

Skills For Life And Work (General Skills)

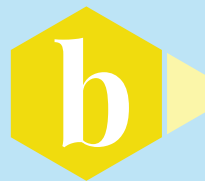
- ▶ Convey ideas in an appropriate written and /or oral format, including where appropriate, presenting this information.
- ▶ Communicate effectively (in writing and verbally);
- ▶ The ability to select and utilize appropriate computer software
- ▶ Set goals and plan a program of work
- ▶ Develop personal learning style
- ▶ Work independently
- ▶ Sensitivity to the values and interests of others

Career Prospects:

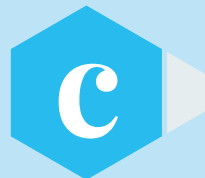
Many opportunities exist in the expansive field of Public Health nationally and globally.



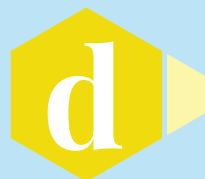
Health Care Consultant



Health Care Manager



Public Health Research



Public Policy Research & Development



Public Records Data Research and
Information Services & much more...

Program Structure

Year 1 and Year 2

10	Course Code BPH1111 Biology	10	Course Code BPH1111 Law and ethics in public health practice
10	Course Code BPH1112 Chemistry	10	Course Code BPH1112 Public Health Policy and Practice
10	Course Code BPH1113 Mathematics	10	Course Code BPH1113 Basics of Biostatistics
10	Course Code BPH1114 Physics	10	Course Code BPH1114 Principles of Epidemiology
20	Course Code BPH1115 Anatomy and Physiology	20	Course Code BPH1115 Basics of Social and Behavioral Health
20	Course Code BPH1116 Principles Of Public Health	20	Course Code BPH1116 Health systems research
20	Course Code BPH1317 Public Health, Health Promotion and Education	20	Course Code BPH1317 Public Health Informatics: Information systems & Management

Year 3 and Year 4

18	Course Code BPH3111 Health and Disease	16	Course Code BPH4111 Family Health & Demography
24	Course Code BPH3112 Communicable and Non-Communicable Diseases	22	Course Code BPH4112 Maternal and Child Health
18	Course Code BPH3113 Environmental Health and Pollution	22	Course Code BPH4113 Health Management & Health Resource Development
22	Course Code BPH3114 Food Technology, Nutrition and Health	20	Course Code BPH4114 Health Economics and Health Care Finance
22	Course Code BPH3115 Water supply and sanitation management	40	Course Code BPH4515 Project Work
16	Course Code BPH3516 Field attachment		

Learning Methodology



Teaching and Learning Plan

Texila American University Zambia is providing quality education with its state-of-the-art infrastructure, best learning methodology and technology enabled academic services.

- Uniquely Designed Learning Methodology
- Outcome Based Academic Delivery
- Continuous Academic Support
- Enhanced Learning Management Systems
- Technology Enabled Services
- Capstone Project, promote integrated learning and understand the connections between various subjects.

MODE 1: Trimester Based

Total 16 weeks in the Trimester (Per Trimester is of 4 months Duration, Online classes will be conducted every week)

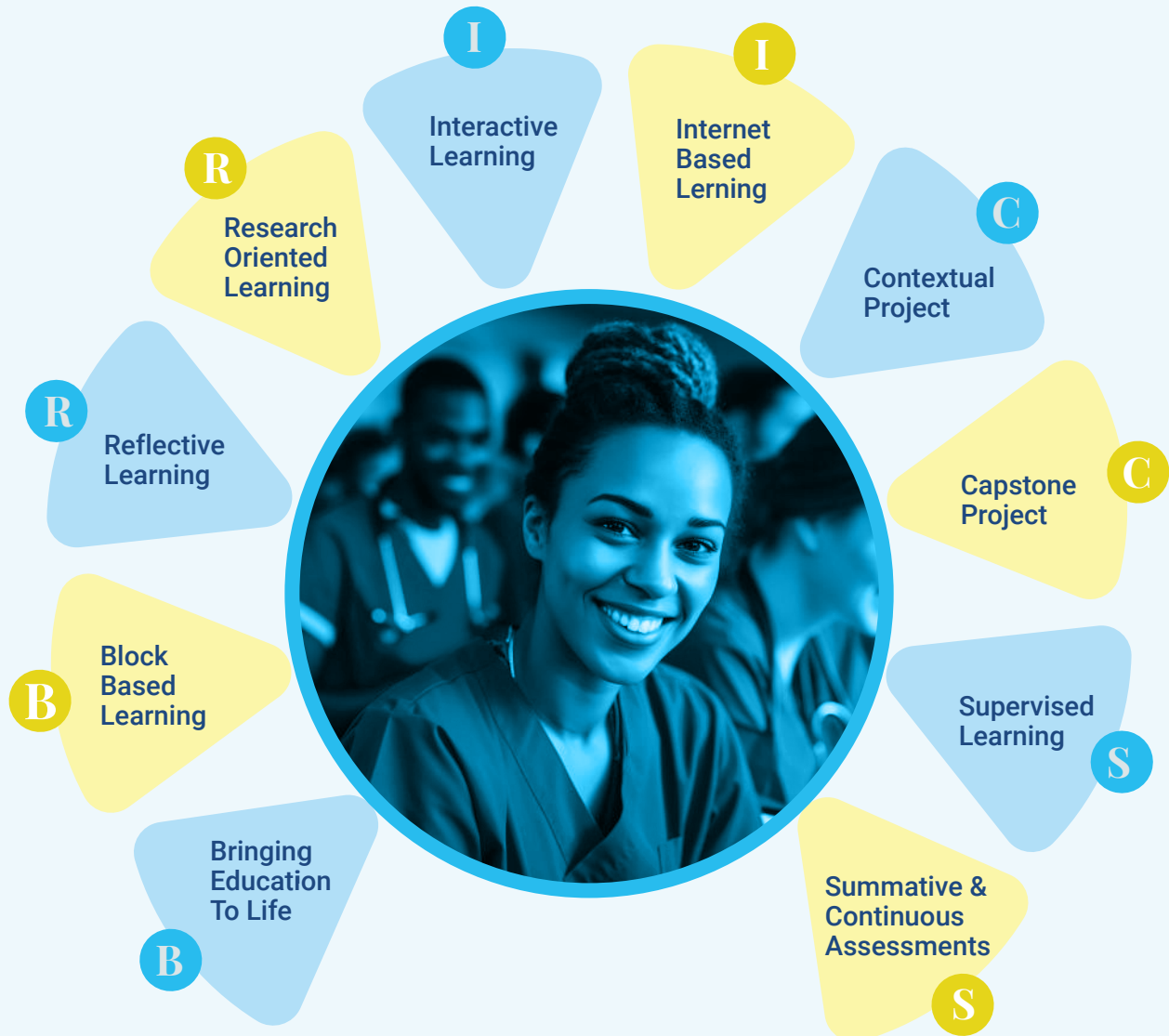
1 week for Exam, Result Declaration - End of 5th Month of the Trimester.

Content/material

- 4 Modules Per Course, 3 Units per Module & 6 (5-7) Chapters in each Unit = $(4 \times 3 \times 6) = 72$ Chapters
- Instructional hours through University Campus: Per course 14 hrs (2hrs x 1days x 7 weeks)
- Suggestive Lecture Duration: 1 Module in two Classes (2 hrs per class/ per week)

MODE 2: Block Based

The core learning methodology includes BRICS models, Forum Discussions, Case Studies, Contextual Project Work, Article Review and Research Project. BRICS model is a uniquely designed methodology



Total 8 weeks in the Block (1 course per Block)

1 week for Exam, Result Declaration – 12th week of the Block.

Content/material

- 4 Modules Per Course, 3 Units per Module & 6 (5-7) Chapters in each Unit = (4x3x6) = 72 Chapters
- Instructional hours: Per course 2 hours Webinar Session
- Suggestive Lecture Duration: 4 Module discussion in 2 hours Webinar Session

Facilities for Programme Delivery

TAU has excellent facilities for the program delivery designed keeping in mind the needs of the student in all means.



Classroom

All our classrooms are well equipped with Hi tech facilities like specially designed classroom projector with computer with uninterrupted network connection. Our entire classrooms are centralized air-conditioned with good lighting. Comfortable seating arrangements are made for student's comfort. We have well equipped and designed computer laboratory with more than 60 computers and one dedicated Server connection for use. To strengthen our Information and Communication technology we have authorized CISCO networking systems.

Research policy

TAU-Zambia has a separate research policy to develop and maintain state of the art technology, resources (research grants/scholarships etc.), facilities and personnel to support educational and advanced research for both students and faculty.

Library

A learning hub for students to satisfy their thirst for inquisitive knowledge and urge. Our huge database is filled with information which can easily help in your academic brilliance. TAU Library is equipped with good number of relevant books for the students to refer and make use of the books for their continuous academic growth.

Learning Management System (LMS)

Learning Management System is the Academic Delivery platform for student, through which lecture contents, video lectures, learning resources, assessment, project submission, grading, etc. A Learning Management System (LMS) is a web-based application through which learning content is delivered and managed. An LMS is tied to on-line and off-line training, administration, and performance management and includes functionality for course catalogs, launching courses, registering learners, tracking learner progress and assessments. An LMS combines a front-end for the learner with a back-end for administrators and instructors. This LMS seamlessly displays, in a browser interface, real-time information drawn from a database. It also allows for competency-driven assessment and course associations.

Faculty and Other Support



Faculty Support

Our globally diverse faculty is dedicated to providing high-quality education and timely support to ensure students complete their courses punctually. Their valuable feedback prepares students for their desired careers.

Student Mentors

Our student mentors are assigned to provide individualized support, offering continuous guidance throughout the program's duration. Their assistance ensures students can easily complete their courses within the scheduled time frame.

Academic Advisors

Our academic advisors will oversee, nurture, and coordinate all-encompassing academic endeavors. They also offer faculty assistance to students for the submission and evaluation of assignments, ensuring timely completion.

Academic Head

Our academic leaders possess extensive experience and offer expert guidance to ensure a seamless and effortless learning experience for students. Students can easily contact them through email, Skype, or telephone calls.

Award of Degree

On successful completion of the program, the candidate will be awarded with the “**Bachelor of Public Health**” degree by Texila American University, Zambia.



Master of Public Health

School of Public Health

Overview of Master of Public Health

The major goal of the Master of Public Health (MPH) degree program, a generic degree programme, is to train and produce professionals with broad knowledge and skills in the practice of public health to provide leadership in community health, planning and implementation of primary health care, and health services improvement. MPH graduates will be sufficiently prepared to engage in cutting-edge scientific research that will contribute significantly to improve quality of life.



Affiliations & Membership:



Program Objectives

After completing the MPH degree program of study, the student will be capable of:

- Apply modern scientific methods and techniques to appraise disease prevalence in the community and conduct needs assessment and epidemiological interventions in the community.
- Participate in community development activities in cooperation with community leaders and representatives of other agencies.
- Apply Public Health principles derived from public health science courses to address:

A Community nutrition issues (growth monitoring etc.);

B Environmental health challenges (water and sanitation etc.);

C Emerging and common, endemic communicable diseases and chronic illnesses.

D Maternal and child health issues challenging communities;

E Community health needs.



Program Outcomes

Teaching, learning and assessment in the MPH programme are designed to ensure that the goals, objectives and outcomes are met. The goals are arranged into three domains and under each domain specific objectives are presented. Curriculum outcomes are presented thereafter.

The following competencies are emphasized for the MPH graduates:

Public Health Practitioner

The MPH education will lead to public health practitioner who is competent as follows:

- Provide comprehensive, culturally acceptable, evidence-based public health services to groups, and communities in a variety of settings (primary, secondary, tertiary).
- Apply critical thinking in engaging public health duties.
- Perform correctly and appropriately public health procedures and processes.
- Analyze the relationship between health and development.
- Synthesize information from primary and secondary sources to help identify interventions and actions in the field of public health.
- Use appropriate methods to appraise public health challenges and health responses to these challenges.
- Assess the healthcare needs of the communities through research, planning and management of healthcare.
- Document and maintain appropriate professional records.
- Communicate effectively.
- Conduct health promotion activities.

Professionalism

Public health practitioners must recognize their professional and personal limitations. Public health practitioners must demonstrate a high level of responsibility, ethical practice, and sensitivity to diverse populations and adherence to legal and regulatory requirements. Public health practitioners are expected to demonstrate:

- Understanding of legal and regulatory requirements, as well as the appropriate role of the public health practitioner.
- Professional relationships with other health care providers.
- Respect, compassion, and integrity.
- Responsiveness to the needs of communities and society.
- Accountability to communities, society, and the profession.
- Commitment to excellence and on-going professional development.
- Self-reflection, critical curiosity and initiative.

Management and Leadership

Management and leadership in public health services are critical roles for a public health specialist.

Public health practitioners are expected to:

- Take a leadership role in planning, implementation and evaluation of public health services.
- Plan, organize, coordinate, and control public health services in a variety of settings (primary, secondary, tertiary).
- Participate actively in the promotion of public health education and practice nationally and internationally.
- Participate actively in professional organizations for the improvement of public health professions

Career Prospects

After completion of MPH program, the career opportunities are :

Career options may require additional experience, training, or other factors beyond the successful completion of MPH degree program.

a Nutrition Consultant

b Social and Behavioral Health Marketer

c Bio-statistician

d Community outreach advocate in an inner-city HIV/AIDS clinic.

e Corporate health promotion department

f Health officer

h Occupational health and safety specialist

i Environmental health specialist

j Public health educator

k Public health information officer

l Public health analyst

m Public health policy coordinator

n Global health professional

o Research analyst

p Health policy adviser

q Epidemiologist

r Community health worker



Program Structure

Total Credits - 60

- 04** MPH1111
Introduction to Public Health Practice
- 04** MPH1112
Public Health Policy
- 04** MPH2111
Social and Behavioral Health
- 04** MPH1114
Environmental Health
- 02** MPHCP01
Capstone- 1
- 04** MPH1115
Epidemiology

- 04** MPH2112
Biostatistics
- 04** MPH2114
Research Methodology
- 04** MPH2113
Maternal and Child Health
- 02** MPHCP02
Capstone- 2
- 04** MPH1116
Public Health Nutrition
- 04** MPH1113
Global health and Disaster Management
- 16** MPH1117
Research work Dissertation & Defense

Learning Methodology



Teaching and Learning Plan

Texila American University Zambia is providing quality education with its state-of-the-art infrastructure, best learning methodology and technology enabled academic services.

- Uniquely Designed Learning Methodology
- Outcome Based Academic Delivery
- Continuous Academic Support
- Enhanced Learning Management Systems
- Technology Enabled Services
- Capstone Project, promote integrated learning and understand the connections between various subjects.

MODE 1: Trimester Based

Total 16 weeks in the Trimester (2 courses per trimester)

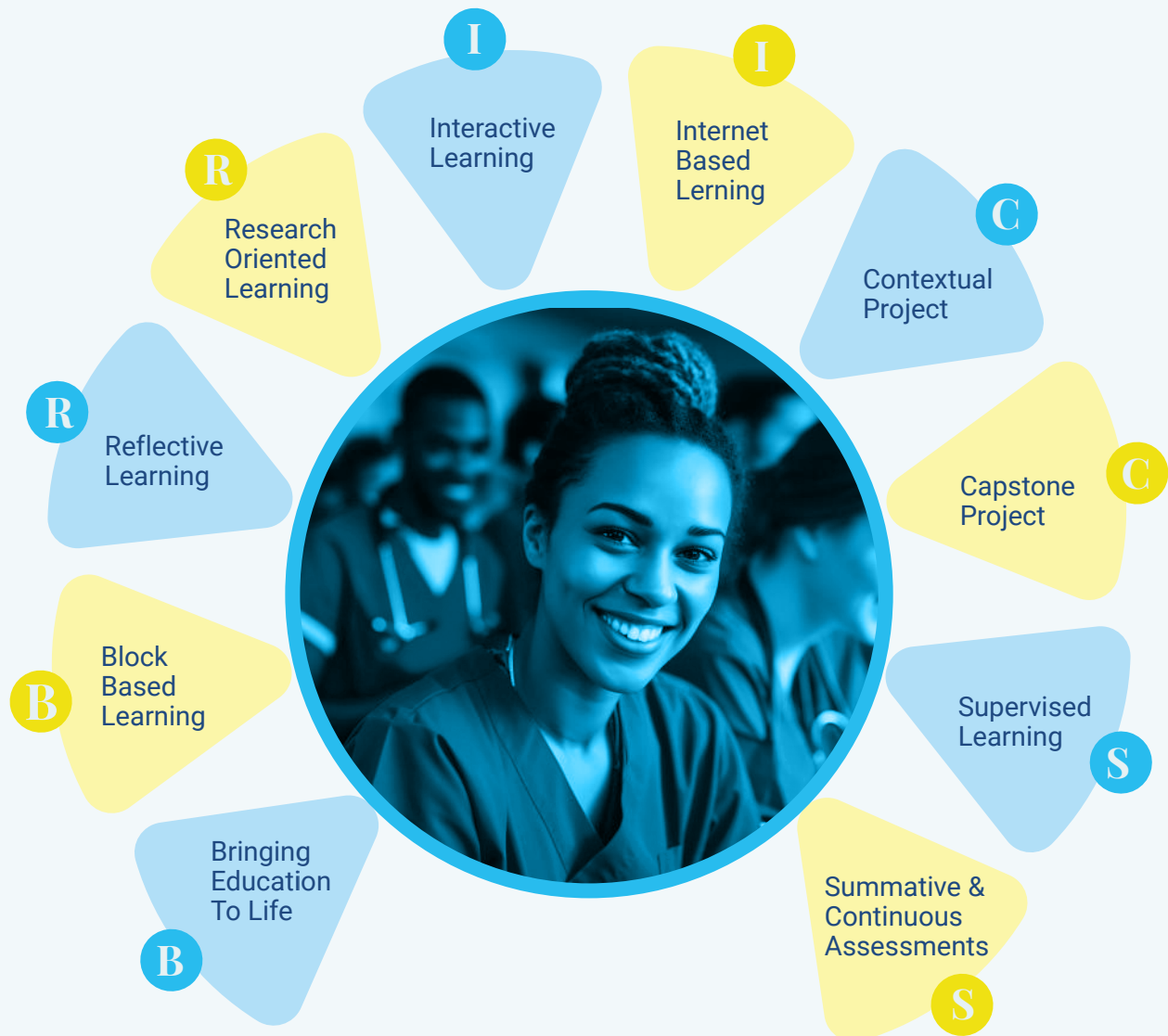
1 week for Exam, Result Declaration - End of 5th Month of the Trimester.

Content/material

- 4 Modules Per Course, 3 Units per Module & 6 (5-7) Chapters in each Unit = $(4 \times 3 \times 6) = 72$ Chapters
- Instructional hours through University Campus: Per course 14 hrs (2hrs x 1days x 7 weeks)
- Suggestive Lecture Duration: 1 Module in two Classes (2 hrs per class/ per week)

MODE 2: Block Based

The core learning methodology includes BRICS models, Forum Discussions, Case Studies, Contextual Project Work, Article Review and Research Project. BRICS model is a uniquely designed methodology



Total 8 weeks in the Block (1 course per Block)

1 week for Exam, Result Declaration – 12th week of the Block.

Content/material

- 4 Modules Per Course, 3 Units per Module & 6 (5-7) Chapters in each Unit = (4x3x6) = 72 Chapters
- Instructional hours: Per course 2 hours Webinar Session
- Suggestive Lecture Duration: 4 Module discussion in 2 hours Webinar Session

Why Choose Us?

Texila American University is the best private university that offers quality higher education in the public health domain. Our degrees are respected and recognized worldwide, and we offer affordable costs and excellent support services for international students as well.



What Do You Gain?

Texila American University empowers students to develop innovative solutions to complex health challenges, including chronic and communicable diseases, obesity, and food insecurity, health care quality and costs and their impact on health. With our flexible online MPH degree program, we prepare students to understand, analyse and lay the ground work for a healthier tomorrow.

Highlights of the Program

Texila American University provides you an excellent opportunity of having the interaction session with the faculties through the University's Residential program under the name of "Academic Engagement" at TAU Zambia campus. At the end of every year the student have to undergo a 7 day "Residential Academic Engagement" program without getting distracted from their regular work environment. The highlights of the program are as follows

- Students can meet the concerned faculty expert to clarify their academic queries.
- Students can present their project presentations and get feedbacks for improvement from both the faculty experts and peer students.
- Industrial Doyen's will be invited for providing special lectures on the advanced topics pertaining to different sectors.
- Exclusive opportunity to the students to utilize their weekend valuably. These classes helps the students to enhance their basic computer skills as well as practical skills in various subject areas. They can make use of the computer labs to practice and enrich their technical skills.



Faculty and Other Support

Faculty Support

Our globally diverse faculty is dedicated to providing high-quality education and timely support to ensure students complete their courses punctually. Their valuable feedback prepares students for their desired careers.

Student Mentors

Our student mentors are assigned to provide individualized support, offering continuous guidance throughout the program's duration. Their assistance ensures students can easily complete their courses within the scheduled time frame.

Academic Advisors

Our academic advisors will oversee, nurture, and coordinate all-encompassing academic endeavors. They also offer faculty assistance to students for the submission and evaluation of assignments, ensuring timely completion.

Academic Head

Our academic leaders possess extensive experience and offer expert guidance to ensure a seamless and effortless learning experience for students. Students can easily contact them through email, Skype, or telephone calls.

Award of Degree

On successful completion of the program, the candidate will be conferred with the **"Master of Public Health"** degree by Texila American University, Zambia.

C



CONTACT US

TEXILA AMERICAN UNIVERSITY- ZAMBIA CAMPUS

405A, Given Lubinda Road, Lilayi, Lusaka Main Reception: +260-9712694
Sales related queries: +260-962649711, <https://tau.edu.zm/>

TEXILA EDUCARE HEALTHCARE AND TECHNOLOGY ENTERPRISES PRIVATE LIMITED

Module 310, III Floor, TIDEL Park, ELCOT-SEZ,
Aerodrome Post, Coimbatore-641014, Tamil
Nadu, India.

+91 422 4639900

TEXILA AMERICAN UNIVERSITY - GUYANA CAMPUS

Lot 2442, Plantation Providence, East Bank
Demerara (EBD), Guyana, South America.

Main Reception: +260-971269480,
Sales related queries: +260-962649711

gy.tauedu.org

TEXILA EDUCATION MANAGEMENT SERVICES

6860 North Dallas Parkway, Suite 200, Plano,
Texas, TX 75024,
+1 (732) 789 3446

TEXILA INTERNATIONAL MARKETING MANAGEMENT

C/O JTC, Suite 2004 Level 2, Alexander House 3
Cybercity,
Ebene 72201, Mauritius



tau.edu.zm



TexilaZambia



texilazambia



texila_zambiaa



TexilaZambiaa